

OUR POND IS ALWAYS FROZEN - OUTLINE OF SCAA PRESENTATION

1. History and Function of Arena

2. Importance of Arena to Communities

3. Who the Stakeholders Are

4. Financing the Arena

Slide Show - Usage Numbers

5. Importance of the Municipality and Town Support

6. Then, Now and the Future with the Municipality and Town

7. Numbers

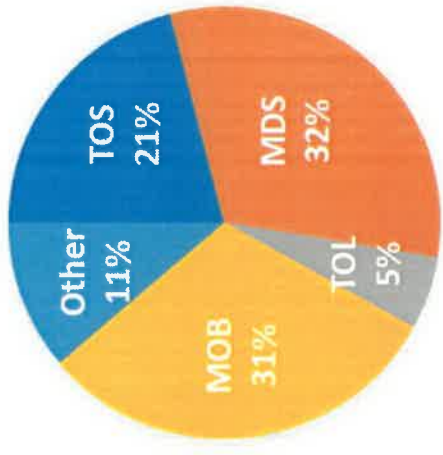
Slide Show - Contributions, Upgrades

8. Closing

# Usage

From the Shelburne County Arena User Data Report 2020-2021 Season (Mun of Shelburne Recreation Dept.)

Majority of all visitors were from (1) Municipality of Shelburne; (2) Municipality of Barrington; (3) Town of Shelburne

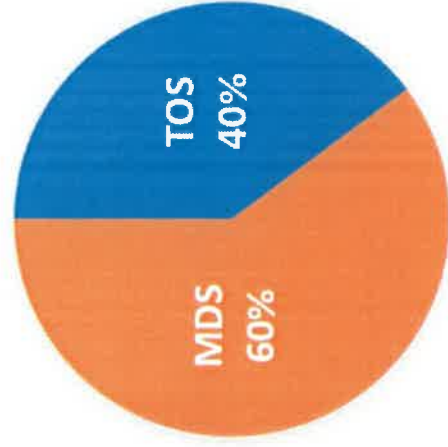


Residence	Visitors	%
MDS	1820	32%
MOB	1763	31%
TOS	1204	21%
TOL	315	5%
Other	650	11%
Total	5752	

# Usage

From the Shelburne County Arena User Data Report 2020-2021 Season (Mun of Shelburne Recreation Dept.)

Comparison of visitors between the Municipality of Shelburne and Town of Shelburne

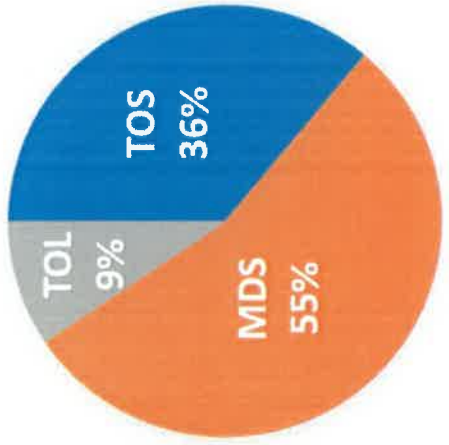


Residence	Visitors	%
MDS	1820	60%
TOS	1204	40%
Total	3024	

# Usage

From the Shelburne County Arena User Data Report 2020-2021 Season (Mun of Shelburne Recreation Dept.)

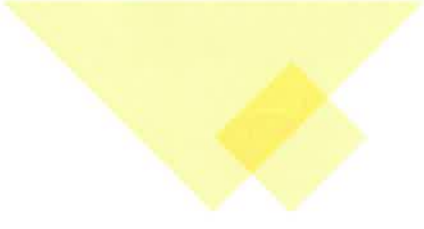
Comparison of visitors between the Municipality of Shelburne, Town of Shelburne and the Town of Lockeport



Residence	Visitors	%
MDS	1820	55%
TOS	1204	36%
TOL	315	9%
Total	3339	

# Operational Contributions

Period	Contribution	Breakdown MDS & TOS
2012-2013 and earlier	\$20,000-\$24,000	\$10,000-\$12,000 each (50%)
2013-2014 to 2019-2020	\$40,000	\$20,000 each (50%)
2020-2021 & 2021-2022	\$28,000	\$20,000 MDS (50% of 40K) \$8,000 TOS (20% of 40K)



# Deficit Contributions

Year	Deficit	Contribution	Breakdown MDS & TOS
2015-2016	\$25,725	\$25,725	\$12,862.50 each (50%)
2016-2017	\$10,670	\$10,670	\$5,335 each (50%)
2017-2018	\$17,074	\$17,074	\$8,537 each (50%)
2018-2019	\$4,557.36	\$4,557.36	\$2,288.68 each (50%)
2019-2020	\$24,031.42	\$16,821.70	\$12,015.71 MDS (50%) \$4,805.99 TOS (20%)
2020-2021	\$18,562.74	TBD	TBD

# Capital Contributions

## **Phase 1 2007-2011**

Approximately \$350,000

**MDS - \$30,000-\$50,000**

**TOS - \$30,000-\$50,000**

1. Roof repairs
2. New furnace and on demand water system
3. New electrical room
4. New heat recover system
5. New dehumidifier
6. Other



# Capital Contributions

## **Phase 2 2011-2015**

Approximately \$350,000

**MDS - \$52,000**

**TOS - \$52,000**

1. Structural enhancements
2. Parking lot paving
3. New chiller brine and brine pump
4. New condensor
5. Exterior Ramp & landscaping
6. Washrooms upgrades
7. Other





# Capital Contributions

## **Phase 3 2017-2018**

Approximately \$240,000

**MDS - \$60,000**

**TOS - \$60,000**

1. New boards, glass and safety net
2. Siding repairs
3. Internal painting – bleachers, dress rooms
4. Outside of building painted
5. Cement work to cover brine pipes
6. New arena sign
7. Dressing room renos
8. New hallway lights
9. New sound system



# Capital Contributions

## **Phase 4 2018-2020**

Approximately \$209,945

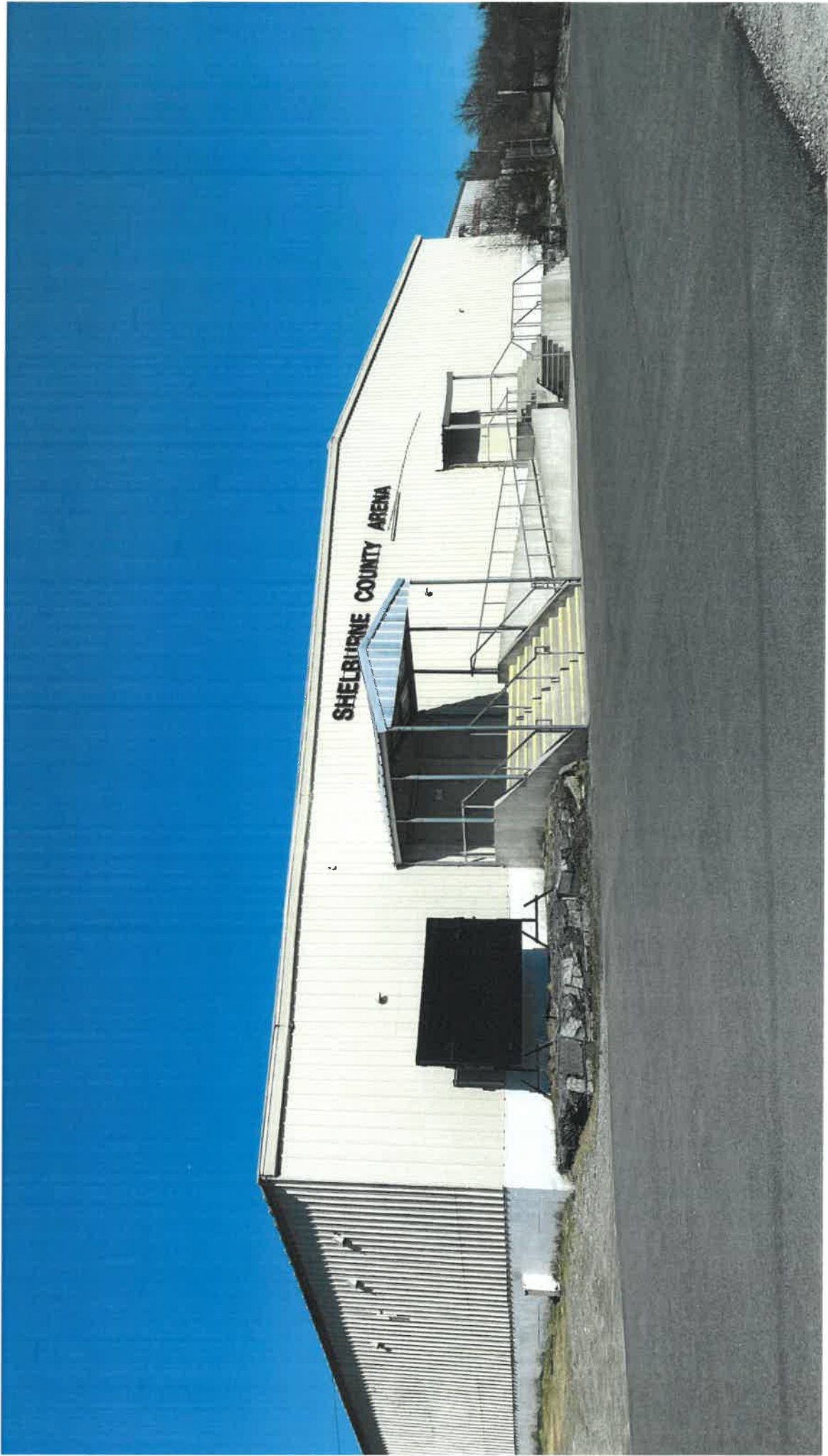
**MDS - \$53,400**

**TOS - \$53,400**

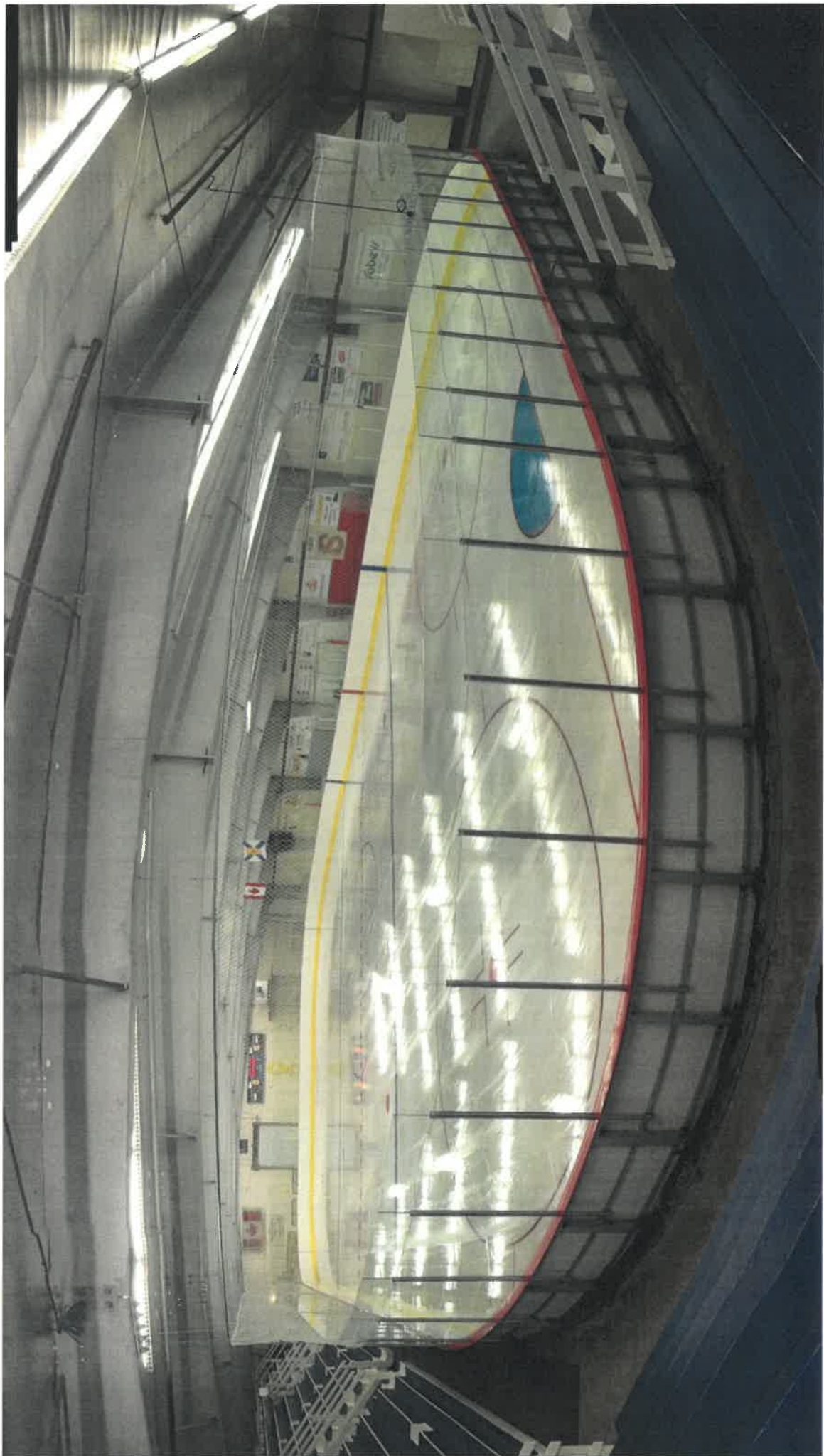
1. New Zamboni \$95,945
2. New compressors \$114,000







SHELburne COUNTY ARENA





# ARENA DAY

## WEDNESDAY, NOVEMBER 29, 1972



Winter Walkathon 15 miles  
Saturday, December 2nd  
Proceeds for the Arena

and Craft Made

1972

...the arena project is a key to ...

...the arena project is a key to ...

### The Winner will be drawn on December 21, 1972

...the arena project is a key to ...

...the arena project is a key to ...

...the arena project is a key to ...

...the arena project is a key to ...

...the arena project is a key to ...

...the arena project is a key to ...

...the arena project is a key to ...

...the arena project is a key to ...

...the arena project is a key to ...

...the arena project is a key to ...

...the arena project is a key to ...

Form with fields for Name, Address, Amount Backed, and Receipt No.

# SUPPORT YOUR ARENA

Presented by the Baltimore Co. Arena Authority